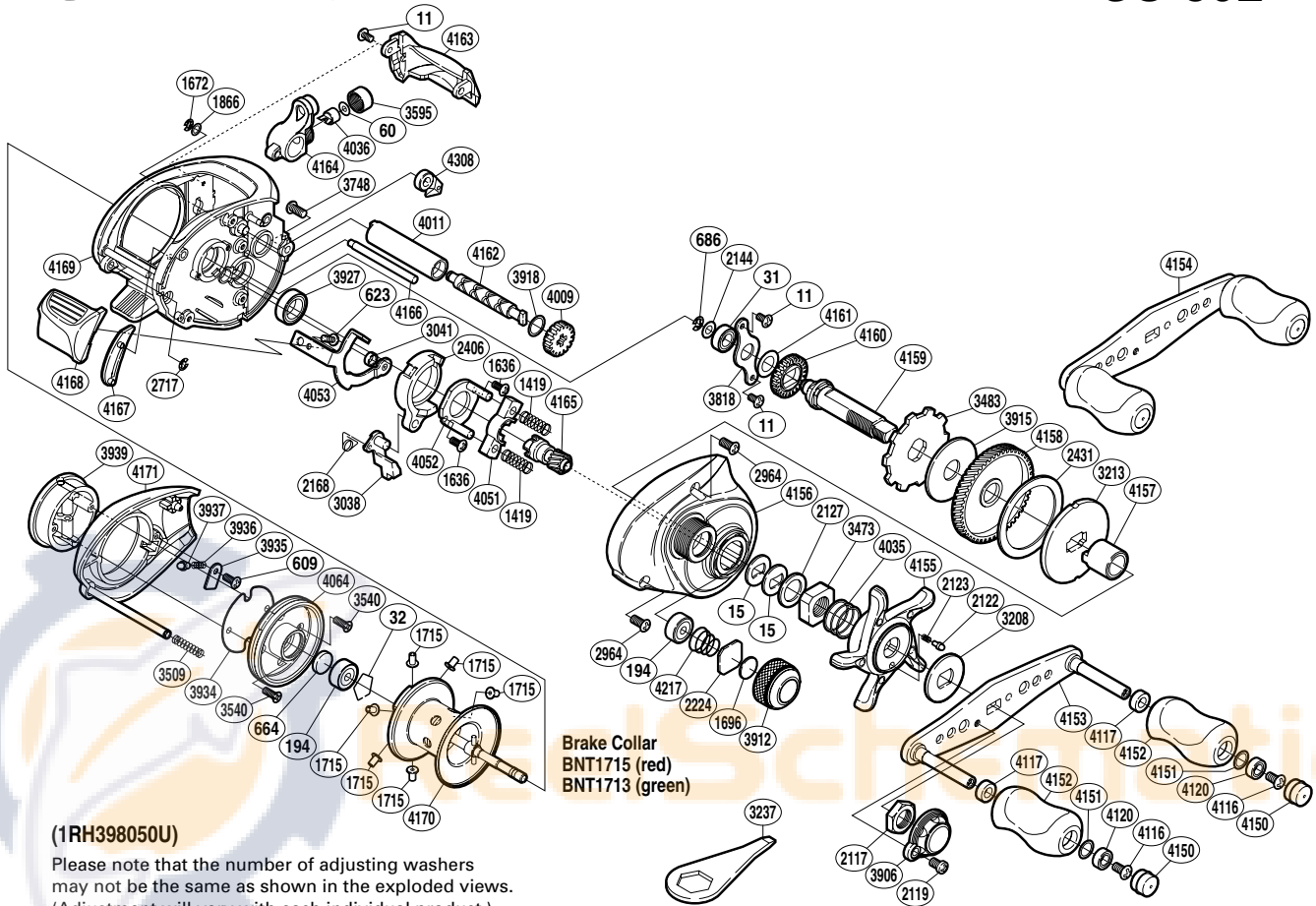


SHIMANO

CURADO A-RB

CU-50E



(1RH398050U)

Please note that the number of adjusting washers may not be the same as shown in the exploded views. (Adjustment will vary with each individual product.)

| Part No. | Description | Part No. | Description | Part No. | Description |
|----------|----------------------|----------|----------------------------|----------|----------------------------------|
| BNT0011 | Screw | BNT3041 | Clutch Plate Shaft Support | BNT4117 | Handle Knob Bushing |
| BNT0015 | Drag Spring Washer | BNT3208 | Star Drag Click Plate | BNT4120 | Ball Bearing |
| BNT0031 | Ball Bearing | BNT3213 | Key Washer | BNT4150 | Handle Knob Seal |
| BNT0032 | Bearing Retainer | BNT3473 | Star Drag Nut | BNT4151 | Washer |
| BNT0060 | Spacer | BNT3483 | Anti-Reverse Ratchet | BNT4152 | Handle Knob |
| BNT0194 | Ball Bearing | BNT3509 | Side Plate Spring | BNT4153 | Handle Shank Assembly |
| BNT0609 | Screw | BNT3540 | Screw | BNT4154 | Handle Assembly |
| BNT0623 | Screw | BNT3595 | Pawl Cap | BNT4155 | Star Drag |
| BNT0664 | Spacer B | BNT3748 | Screw | BNT4156 | Right Side Plate |
| BNT0686 | E Lock | BNT3818 | Drive Shaft Retainer | BNT4157 | Roller Clutch Inner Tube |
| BNT1419 | Yoke Spring | BNT3906 | Handle Retainer | BNT4158 | Drive Gear |
| BNT1636 | Screw | BNT3912 | Cast Control Cap | BNT4159 | Drive Shaft |
| BNT1672 | E Lock | BNT3915 | Drag Washer | BNT4160 | Idle Gear |
| BNT1696 | Cast Control Spacer | BNT3918 | Washer | BNT4161 | Washer |
| BNT1715 | Brake Collar (red) | BNT3927 | Ball Bearing | BNT4162 | Worm Shaft |
| BNT1866 | Washer | BNT3934 | Brake Case Spacer | BNT4163 | Level Wind Protector |
| BNT2117 | Handle Nut | BNT3935 | Brake Spring Retainer | BNT4164 | Line Guide |
| BNT2119 | Screw | BNT3936 | Click Spring | BNT4165 | Pinion Gear |
| BNT2122 | Click Pin | BNT3937 | Click Pin | BNT4166 | Level Wind Guide |
| BNT2123 | Click Spring | BNT3939 | Turnkey Dial | BNT4167 | Clutch Bar Guide |
| BNT2127 | Star Drag Spacer | BNT4009 | Idle Gear | BNT4168 | Quick-Fire II Clutch Bar |
| BNT2144 | Washer | BNT4011 | Level Wind Guard | BNT4169 | One-Piece Frame |
| BNT2168 | Clutch Pawl Spring | BNT4035 | Star Drag Spring | BNT4170 | Spool Assembly |
| BNT2224 | Spool Tension Spacer | BNT4036 | Line Guide Pawl | BNT4171 | Left Side Plate |
| BNT2406 | Clutch Cam | BNT4051 | Yoke | BNT4217 | Spool Tension Spring |
| BNT2431 | Drag Washer | BNT4052 | Clutch Cam Retainer | BNT4308 | Anti-Reverse Pawl |
| BNT2717 | E Lock | BNT4053 | Clutch Plate | | |
| BNT2964 | Screw | BNT4064 | Brake Case | BNT1713 | Brake Collar (green) (accessory) |
| BNT3038 | Clutch Pawl | BNT4116 | Screw | BNT3237 | Wrench (accessory) |